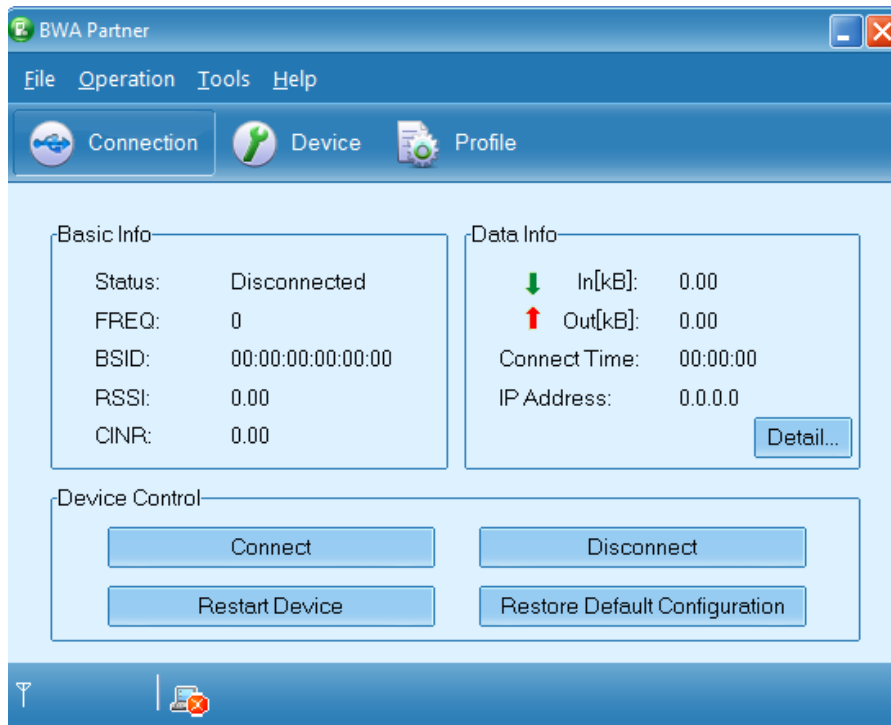


Thank you for choosing Wego, we hope it exceeds your satisfaction. In this guide we will help you to:

- A- Set the user name and password For the BM358.
- B- Change the password (if needed).

A- Set the user name and password For the BM358.

- 1- Connect BM358 to your PC
- 2- Run the BWA Partner to install the software.
- 3- Follow up the BWA partner setup wizard to finish installation.
- 4- After installation, open your BWA partner by double clicking on the icon on your desktop.

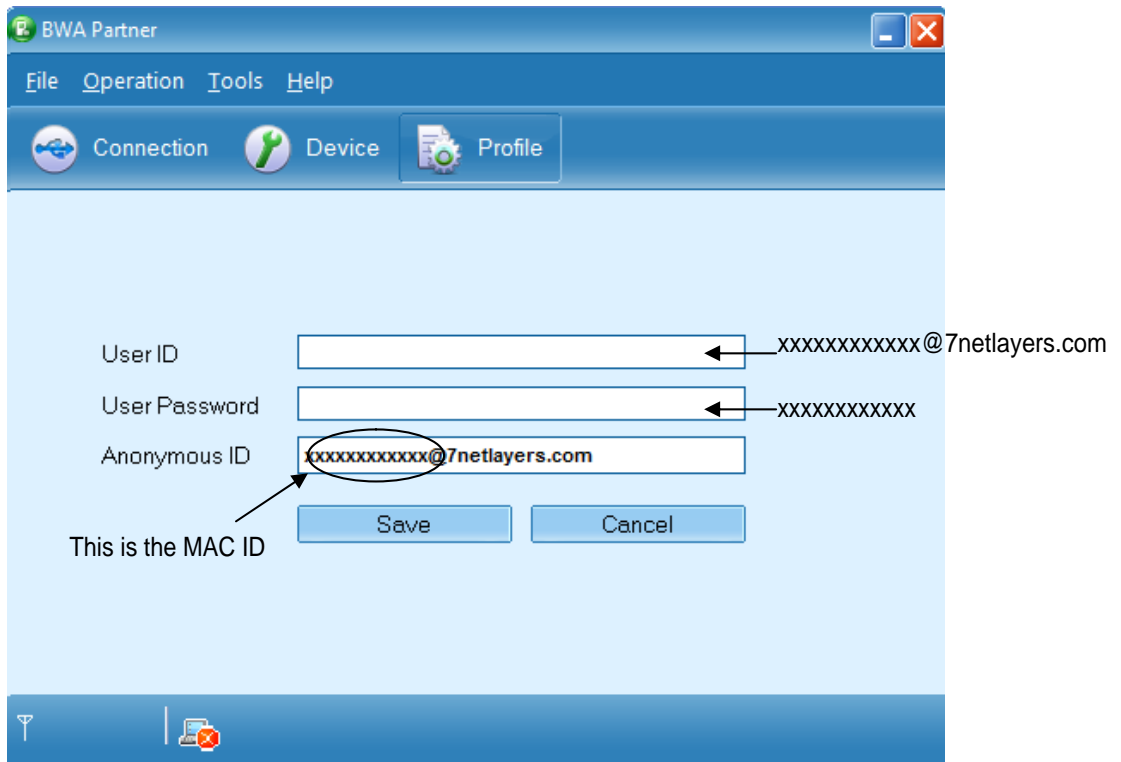


- 5- Go to the profile button to enter your username and password.

As shown in the figure below; xxxxxxxxxxxx is the MAC ID which is available at Anonymous field or on the backside of your USB CPE. (It is 12 digits)

User ID: xxxxxxxxxxx@7netlayers.com so you can copy paste it from the Anonymous ID

User Password: xxxxxxxxxxxx

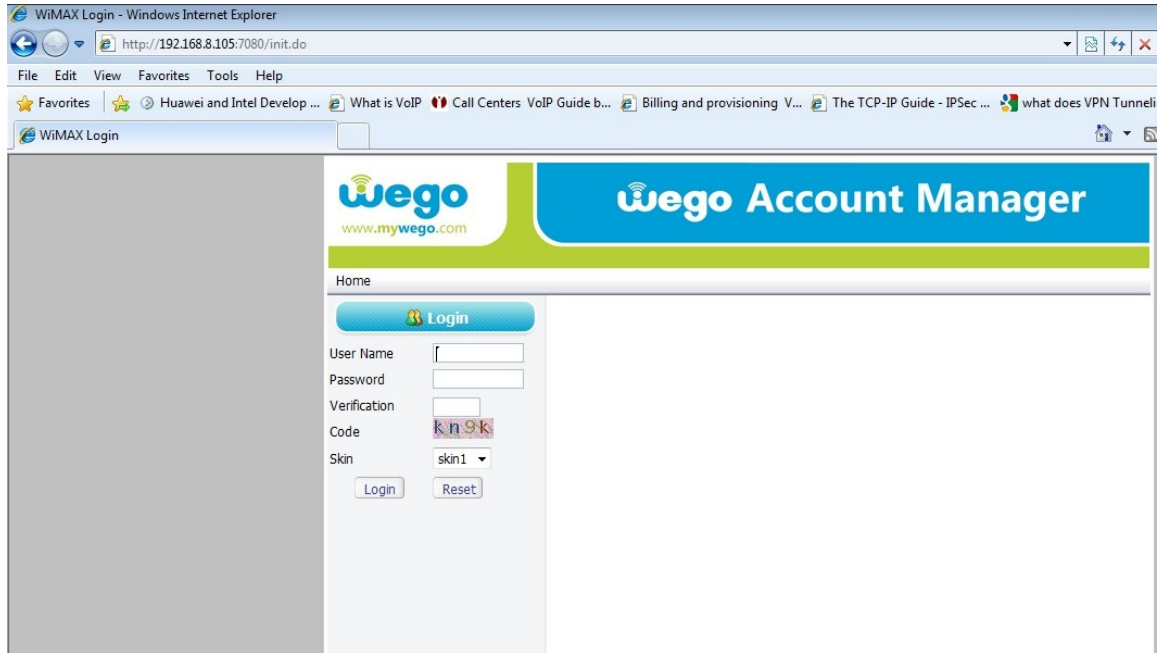


5-Go to the connection and connect

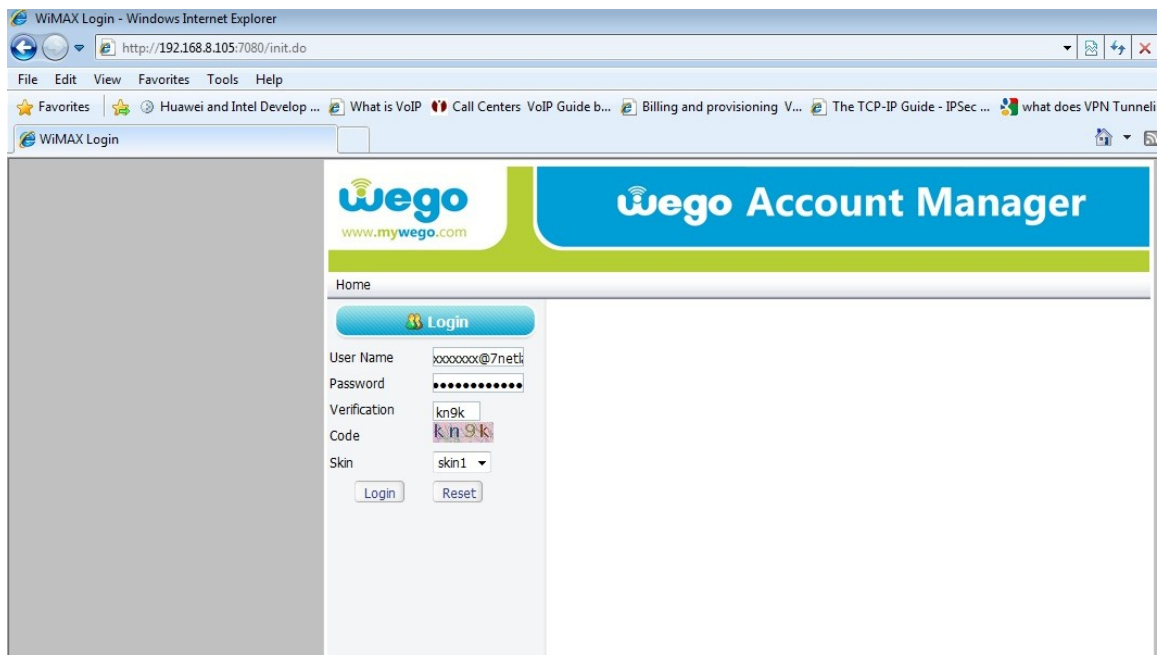


B- Change the password (if needed).

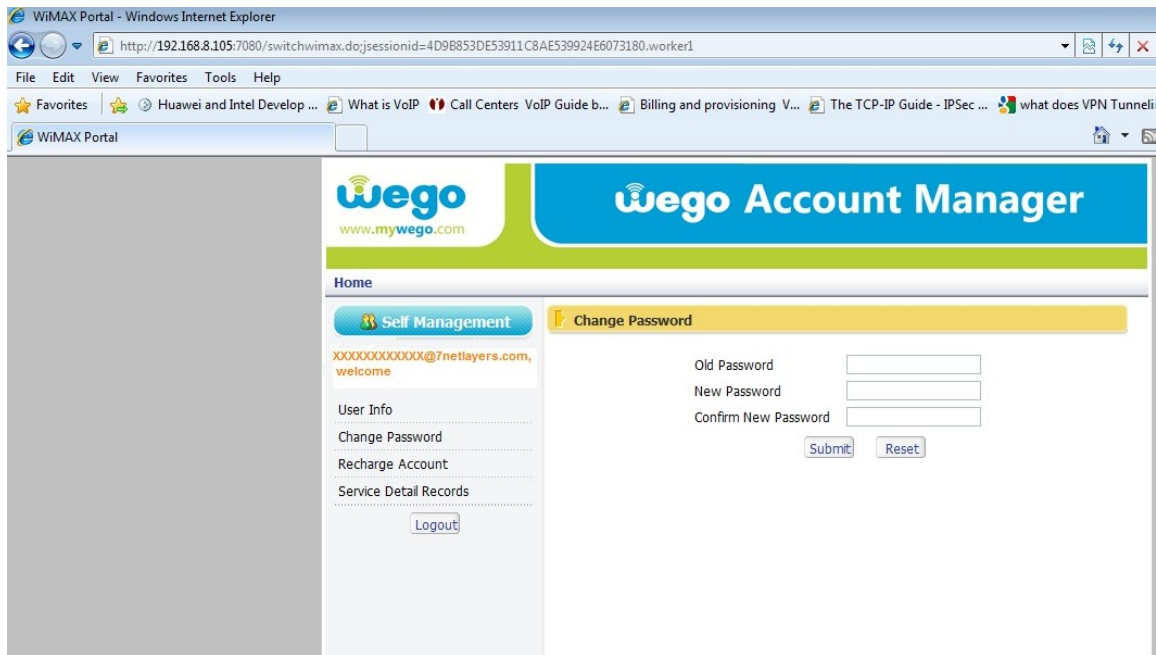
1- Go to the portal by entering <http://portal.mywego:7080> in the web page



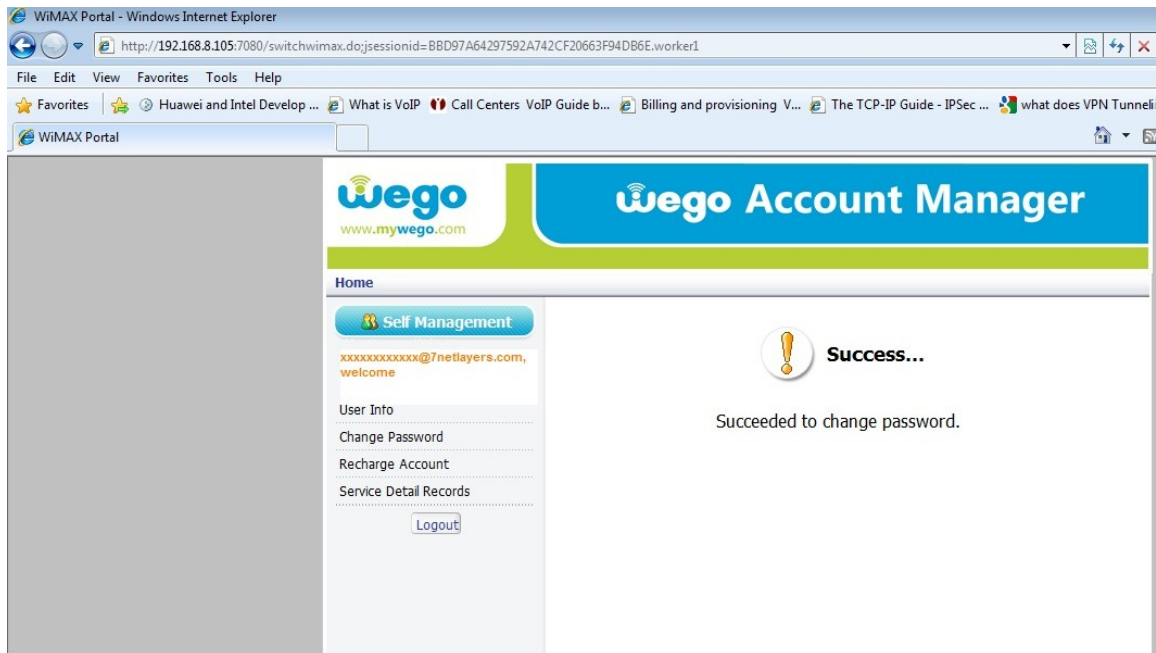
2- Enter your Username, Password, and Verification Code and then login



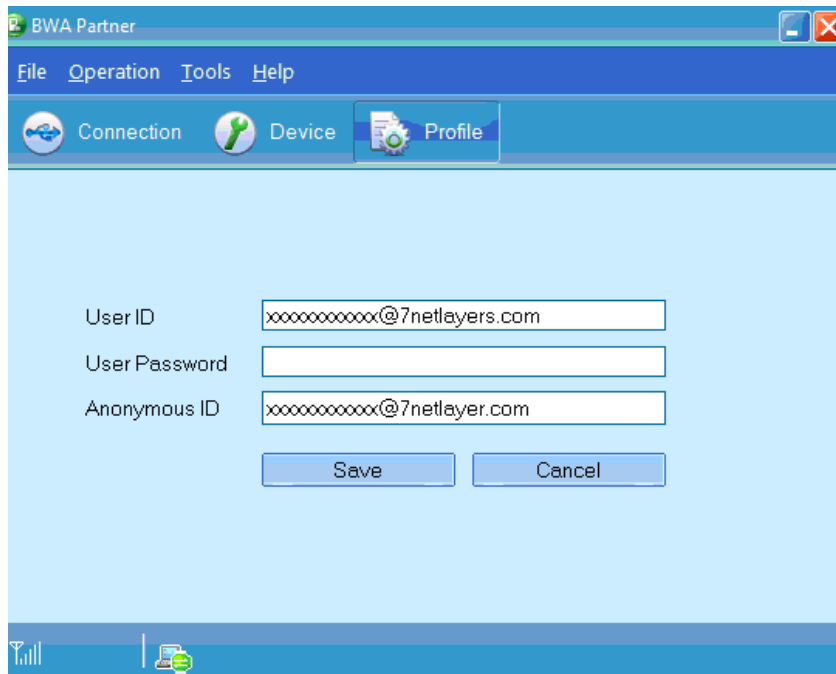
3- Go to Change Password, enter you Old and New Password and then Submit



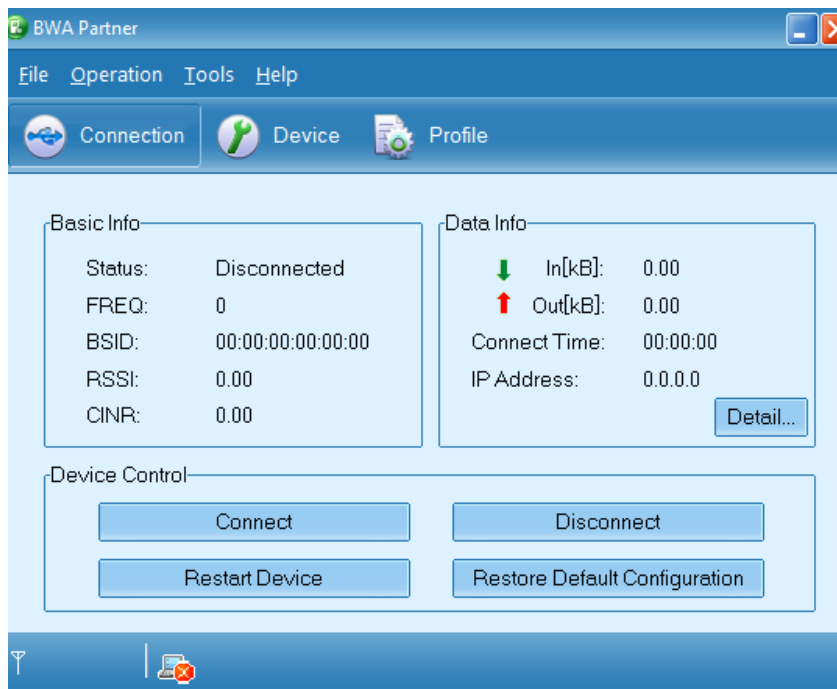
4- After submitting your new password you will get this picture and then logout



5-Open the BWA partner and go to the profile and set your new password under user password and then save it. Your internet will disconnect



6- To connect the internet: go to the connection, click on the restart device, wait a few seconds and then connect.



NOTE: please don't try to change other options, since it might affect your CPE functionality. You can download this guide anytime from www.mywego.com

Thank you for choosing Wego.

This document was created with Win2PDF available at <http://www.daneprairie.com>.
The unregistered version of Win2PDF is for evaluation or non-commercial use only.